

# Air Operated Drum & Tank Pumps

## Model DM-55DPB Xtreme Duty Pneumatic Pump

Pump Tubes:  316SS,  Polypropylene,  CPVC,  Kynar (PVDF)

### Specifications, Parts Codes & Views

#### Applications & Examples of Liquids Pumped

A high performance, industrial duty, variable flow, easily handled, pneumatic pump for most types of mild or aggressive liquids up to medium thickness (250 centipoise). Suitable for transferring chemicals, cleaners, concentrates, corrosives, non-flammable solvents and many liquid compounds compatible with the equipment materials listed here. Bung or clamp mounted for secure pumping. The pump equipment is generally interchangeable with other drum pump brands.

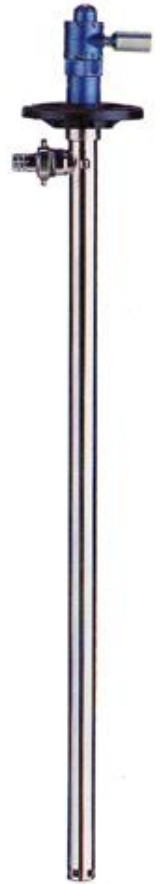
#### Drum Pump Drive Specifications

**Model DM-55DPB-B**, ½ Hp (370 watts), Max. 38 Gpm (167L), 450 Cps., 22 cu. ft./min. @ 90 Psi – 10,000 Rpm. Wt. 3 lbs. (1.6 Kg.) Aluminum housing with plastic mounting bracket. Pump is suitable for flammable-hazardous duty and areas with flammable materials with professional installation. Head, 65 ft. and 1000 Cps with High-Head pump tube.

This interchangeable pneumatic pump drive is designed for use with any type of "DP" series drum or tote/tank pump tubes. Operating specifications are included with each assembly. The drive provides variable flow control, with an unlimited dry-run cycle. Use the bung safety adapter **DM-55BA/PP** or **/SS** for safer tube mounting security and the **DM-55PWB-L** wall hanging bracket for safe pump tank storage.

#### Pump Tubes

Available in CPVC, (Max. 190°F), polypropylene, (Max.130°F), Kynar (PVDF 180°F), 316 stainless steel (180°F), in 27", 39", 47" 60", 72" lengths, with internals of Teflon, ceramic, carbon and Hastelloy. Tube diameter, 1.625" (41mm), dispensing port: 1.0" OD hose barb. Use pump tube most compatible for the application liquid and thickness. A "High-Head" (HH) version of these pump tubes is available, increasing both the head (pumping height) pressure and thickness capacity of the pump. The tube pictured below is representative of the other tubes.



DM-55DP-B Pump and 316 SS Tube

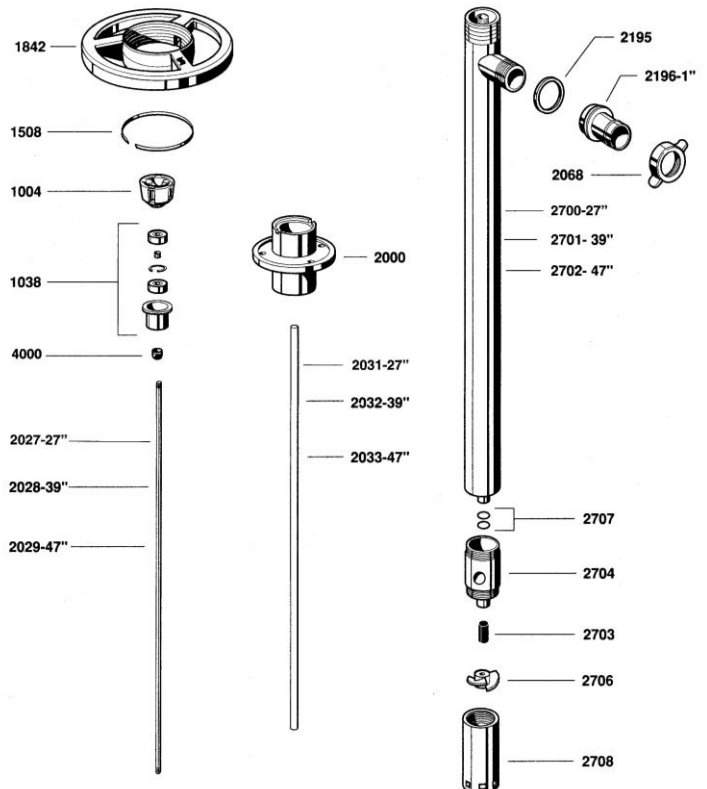


CAUTION!

These air motors are not recognized for use in flammable operations.



Model DM-55DPB Drum Pump Drive

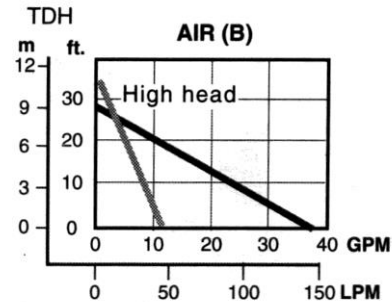
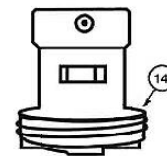
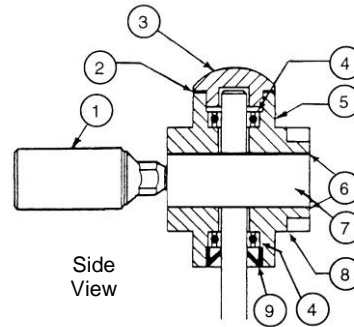
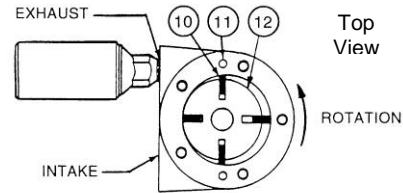


DM-SS39 Stainless Steel Drum Pump Tube

# Model No. DM-55DPB

## Pneumatic Drive, Parts List & Views

Item #	Part No.	Part Description
1	55-SAF350	Muffler
2*	55-SAC229	Gasket
3	55-SAC228A	Dead End Cap
4*	55-SAG549	Bearing (2 Required)
5	55-SAC617	Dead End Plate
6*	55-SAC527	Gaskets (2 Required)
7	55-SAE899	Drive Body
8	55-SAC616	Drive End Plate
9*	55-SAC190A	Shaft Seal
10*	55-SAE893	Vane (Set of 4)
11	55-SD324A	Dowel Pins (4 Required)
12	55- SAE896	Impeller rotor
13*	55-SK285*	Repair Kit * (Items 2, 4, 6, 9, 10)
14	55-9007	Motor coupling (not shown)



### Warnings & Notices

#### CAUTION

Before unpacking this motor, read and fully understand all safety and operating instructions. This pump is not for use with flammable liquids or in a flammable area.

#### IMPORTANT:

Operator must always wear all necessary safety equipment including, safety eyeglasses, respirator, safety gloves, apron, shoes and noise protection and any other necessary protective gear for the application.

#### Warranty Compliance Notice

The DM-55FRL or an equivalent FRL (air filter, pressure regulator and automatic oiler) must be used to maintain drive performance and for warranty compliance.

### Optional Accessories:

DM-55PWB-L, pump safety storage bracket, vinyl coated steel  
 DM-55DP0150/SK, pump service kit with 2 year internal parts  
 DM-55DPFM, Flow meter, 4-31 Gpm, 59 Psi, Accur: +/- 1%, 1" Npt

**Xtreme Duty Hand Dispensing Nozzles** (see below)



DM-85HFR  
PP, SS, Viton



DM-700HFR  
AL, SS, Teflon



DM-800HFR  
316ss, TFE

