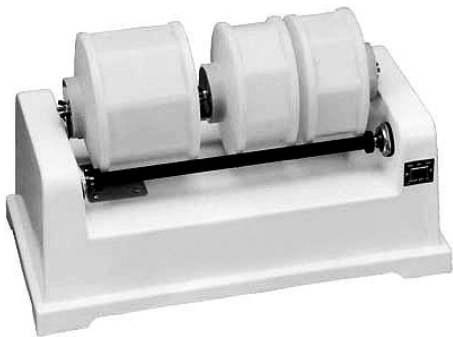


# ***Tumble That Product!***

## **Model # DM-LBT Series Lab Tumblers**

**Lab Tumblers**



### **Benefits & Applications**

These easy-load laboratory tumblers use special hexagon barrels (or your own container) and offer repeatable, quick batching cycles with much easier clean-up. With shorter batch cycles, you can get more work or tests done and increased production output.

Enclosed rotation tumbling keeps the material inside the container, eliminates spillage, stops splashing of contents on operators while reducing the possibility of cross-contamination or risk of environment contamination.

New uses of drum rollers and rotators are being discovered all the time and could be the solution to a need or problem in your lab or production facility. Save batch time, labor, cost and aggravation.

### **Operation & Features**

Tumblers are made for wet or dry industrial duty tumbling, on a high quality, reinforced fiberglass Easy-clean, polished gloss tumbler base. Barrels lids are fitted with silicone o-rings to ensure a tight seal. No-maintenance sealed bearings on both 1/3 Hp motor and urethane covered solid steel precision ground roller bars. Great for blending, deburring, polishing, cleaning or mixing small parts, compounds, etc. Multiple barrels permit mixing of different batches simultaneously. Materials including glass, stone, ceramic or steel can be polished or burnishing at a very low cost. Special tumblers bar spacing can be requested to accommodate your specific container size. Spare parts readily available.

- All Models provided with 1/3 Hp, Drive, 120 volt, 60 Hertz or 220 Volt, 1PH/50Hz
- 2 Speed Hi/Lo Rpm Settings, 1725/1140 Rpm (Variable speed available on request for best RPM selection.)
- Each tumblers size can rotate different size and quantity batching barrels simultaneously

### **2 Speed Tumbler Models Bar Diameter, 1.0"**

DM-100LBT, Small Batch, tumbles 2 each 3.5 quart barrels, Base: 23" x 16" x 13" Ht., 2-Bar Space: 4.5", Bar length: 9.25"

DM-200LBT, Medium Batch, tumbles 1, 3.5 gal or 2, 2.5 gal. barrels, 36" x 19" x 13" Ht., 2-Bar Space: 7.5", Bar length: 24"

DM-300LBT, Large Batch, tumbles 8 each, 22 oz. tumbler barrels, 36" x 19" x 13" Ht., 3-Bar Space: 3.5", Bar length: 24"

### **Tumbling Barrels, (Tumbling Barrels, sold separately)**

Materials of Construction: HDPE (High Density Polyethylene, with silicone seal on stainless steel lid.



Increase blending, polishing, cleaning or agitation efficiency with these special flat wall tumbling barrels ensuring excellent product tumbling & quicker homogeneity.  
*Barrels Sold Separately.*

**Other Models for 5 gal. and 55 gal. drum rolling, tumbling & rotating also available.**

*Barrel Specifications > see reverse side ...*

# Lab Tumbler Barrel Specifications



Barrel Model	TBL-1	TBL-2	TBL-3	TBL-4	TBL-6
<b>Barrel Specifications:</b>					
Total Capacity	22 fl.oz.	3.5 qts	1.5 gal	2.5 gal	8.0 gal
Net Weight	1.5 lb	2.5 lb	3.0 lb	4.0 lb	9.0 lb
Diameter	4.75"	8.25"	10.0"	10.75"	15.75"
Height	4.75"	4.375"	7.0"	10.5"	14.75"
Barrel Lid Opening	3"	4"	4"	4"	7.25"
<b>Barrel RPM's on High or Low speed setting:</b> (Variable Speed settings determined by User.)					
Low	29	36	29	25	18
High	44	54	43	40	27
<b>Maximum Barrels that fit on Rotary Tumbler base:</b>					
DM-100LBT, 2-Bar	2	2	1	1	0
DM-200LBT, 2-Bar	0	4	3	2	1
DM-300LBT, 3-Bar	8	0	0	0	0



Ask for literature on DRUM-MATES® drum & tote mixers, drum tumblers, drum/tote pumps & hand nozzles.  
DRUM-MATES® Inc., Process Equip. Div., Tel: 609-261-1033, Fax: 609-261-1034, E: info@drummates.com