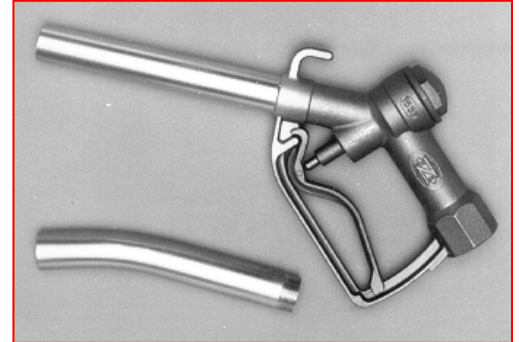


# Aluminum Hand Nozzles

Hand nozzles for dispensing from pumps & containers

## Benefits and Features...

- Careful flow control for better operator & environmental safety
- Fine gravity or pressure dispensing from pumps and tanks
- Helps prevent spillage during critical liquid transfer operations
- Simplifies liquid filling or repacking into smaller containers
- Excellent for all liquids compatible with aluminum and Viton
- Other high-flow nozzles with 1.5 or 2" F-NPT bases available



## Industrial Applications:

## General or Heavy Duty Liquid Dispensing Service

- |  |  |
|--|--|
| <ul style="list-style-type: none"> <li>➤ <b>Aluminum body</b></li> <li>➤ <b>Heavy wall construction</b></li> <li>➤ <b>Extra large flow passage</b></li> <li>➤ <b>Replaceable aluminum spout</b></li> <li>➤ <b>1" &amp; 3/4" NPT female base</b></li> </ul> | <p>Excellent corrosion resistance to most chemicals and industrial liquids</p> <p>For extra strength and durability</p> <p>Achieves low pressure drop and reduces foaming</p> <p>Straight spout simply threads in (curved available on some models)</p> <p>Inlet accepts 1.0" male connector (3/4" available on some models)</p> |
|--|--|

## Specifications

### Model # DM-600HFR Series

### Model # DM-700HFR Series

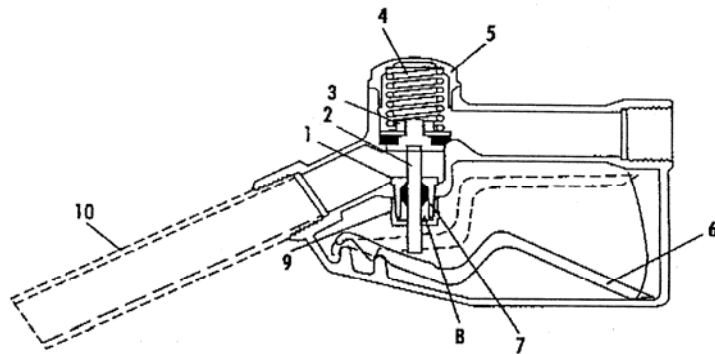
<p><b>Description</b></p> <p><b>Hose Inlet</b></p> <p><b>Nozzle weight</b></p> <p><b>Nozzle Body, stem, spout</b></p> <p><b>Packing &amp; Disc</b></p> <p><b>Flow/Pressure/Temperature</b></p>	<p>aluminum, general duty</p> <p>1.0" NPT</p> <p>2.0 lbs.</p> <p>aluminum</p> <p>Viton or Buna</p> <p>40 Gpm, 90 Psi, 150°F*</p>	<p>aluminum, heavy duty</p> <p>1.0" NPT</p> <p>3.0 lbs.</p> <p>aluminum</p> <p>Viton, Buna or Teflon</p> <p>50 Gpm, 100 Psi, 150°F*</p>
--	--	---

\*Temperature may be raised to 180°F with appropriate safety equipment & procedures.

## Ordering Specifications

### Replacement Parts

Key	Part Description
1	Stuffing Box
2	Stem
3	Poppet S/A
4	Spring
5	Cap
6	Lever
7	Packing
8	Packing Gland
9	Packing Nut
10	Dispensing Spout



For better product Quality Control during batch mixing, ask for DRUM-MATES® TQMixing™ Guidelines.  
 For explosion-proofing, use grounding kit No. DM-166GWK for most mixing or dispensing equipment  
 NOTE: For easy "Pick 'n' Match", all mixer shafts, mixer drives and accessories are sold separately.  
 DRUM-MATES® Inc., Mixer & Pump Div., Tel: 800-621-3786 and 609-261-1033, Fax: 609-261-1034