

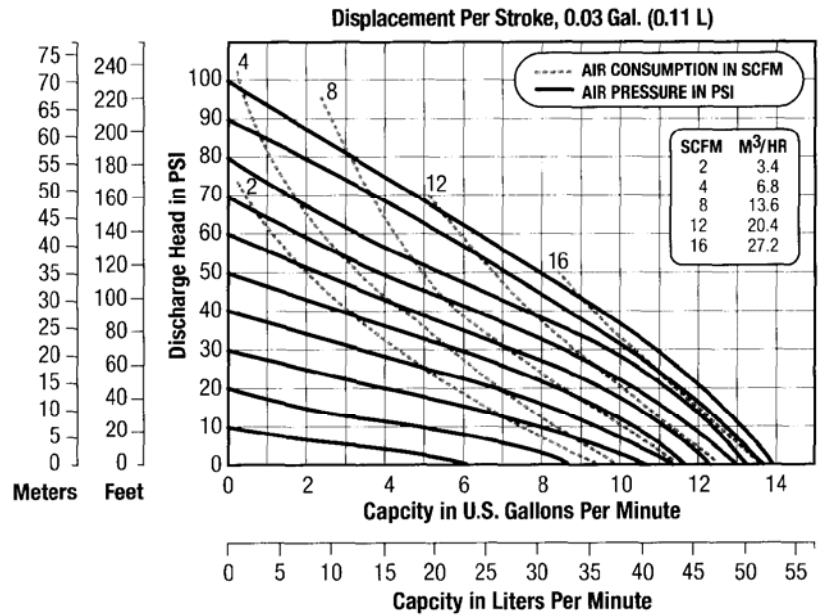
1/2" Double Diaphragm Pump • Xtreme Duty

Model No. DM-DDP12ALT, Aluminum with Teflon Internals

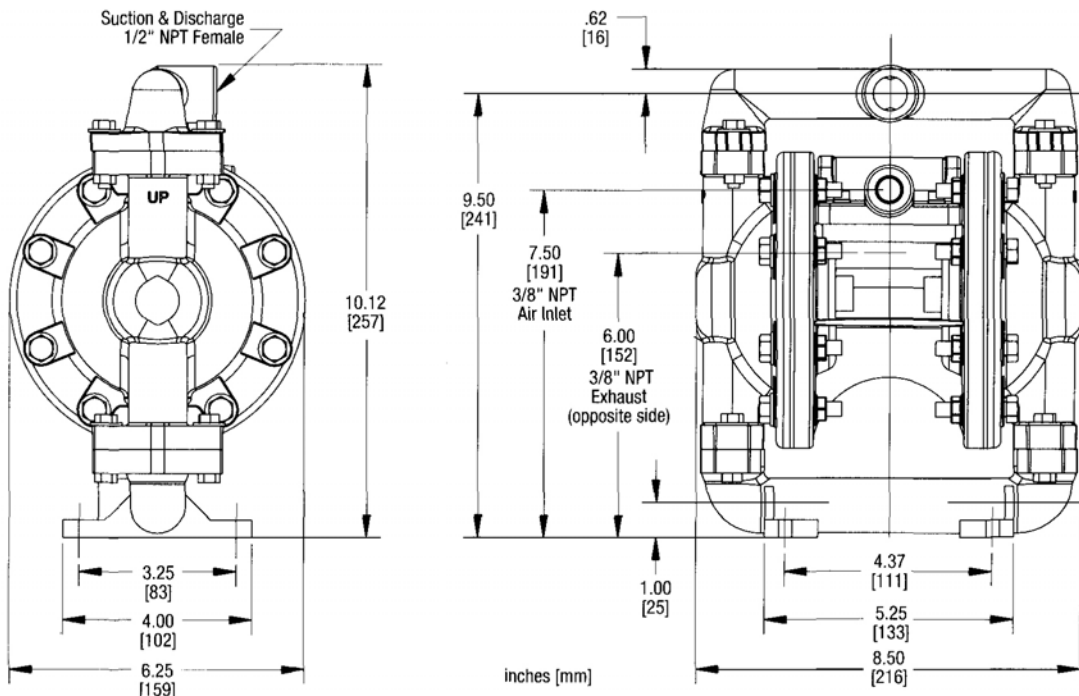
Specifications

Flow Rate adjustable to . . . 0-14 gpm (53 lpm)
Port Size
 Inlet and Discharge 0.50" NPT
Air Inlet 0.375" NPT
Air Exhaust 0.375" NPT
Suction Lift . . 15' Dry/25' Wet (6.096m/7.62m)
 Teflon™ 5' Dry/10' Wet (1.52m/3.048m)
Max. Particle Size (Dia.) 0.0625" (1.6mm)
Shipping Weights
 Stainless Steel 18 lbs (8.17 kg)
 Hastelloy C 18 lbs (8.17 kg)
 Aluminum 15 lbs (6.80 kg)

Performance



Dimensions



Ask for literature on DRUM-MATES® drum/tote mixers, drum tumblers, drum/tote pumps & hand nozzles.
 DRUM-MATES® Inc., Liquid Processing Equipment Div., Tel: 609-261-1033, Fax: 609-261-1034