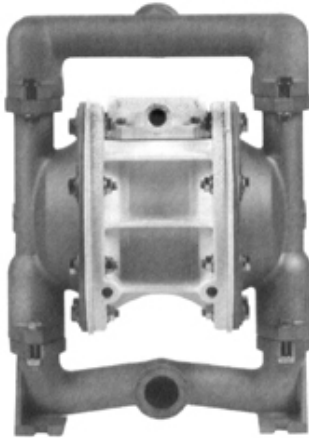


1" Double Diaphragm Pump • Food Grade

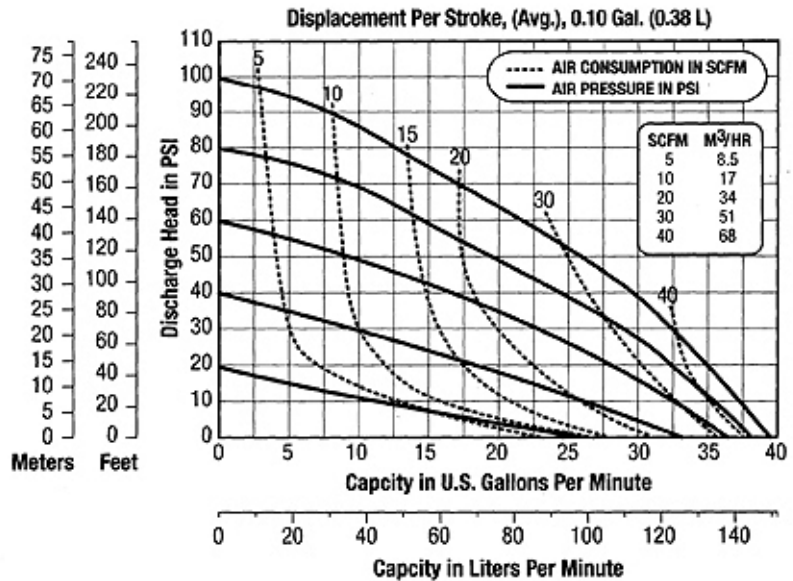
Model No. DM-DDP1SST, 316 Stainless Steel, 1.5" Tri-Clamp Port

Specifications

Flow Rate adjustable to . . . 0-35 gpm (132 lpm)
Port Size
 Inlet and Discharge 1.5" Tri-Clamp®
Air Inlet 0.375" NPT
Air Exhaust 0.50" NPT
Suction Lift . . . 15' Dry/25' Wet (4.57m/7.62m)
 Teflon® 10' Dry/20' Wet (3.05m/6.10m)
Max. Particle Size (Diameter) . . 0.125"(3.17mm)
Shipping Weights
 Stainless Steel 42 lbs (19.05 kg)



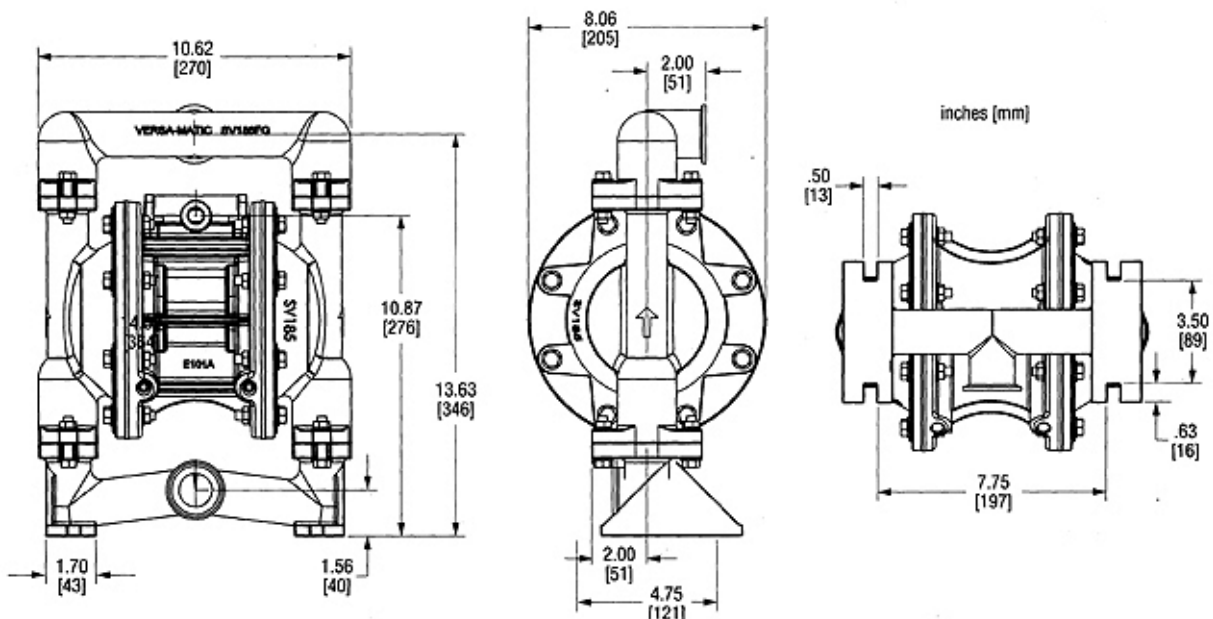
Performance



For Teflon diaphragm fitted pump, reduce water discharge by 20%

CAUTION: Do not exceed 125 psig (8.5 bars) air supply or liquid pressure.

Dimensions



Ask for literature on DRUM-MATES® drum/tote mixers, drum tumblers, drum/tote pumps & hand nozzles.
 DRUM-MATES® Inc., Liquid Processing Equipment Div., Tel: 609-261-1033, Fax: 609-261-1034