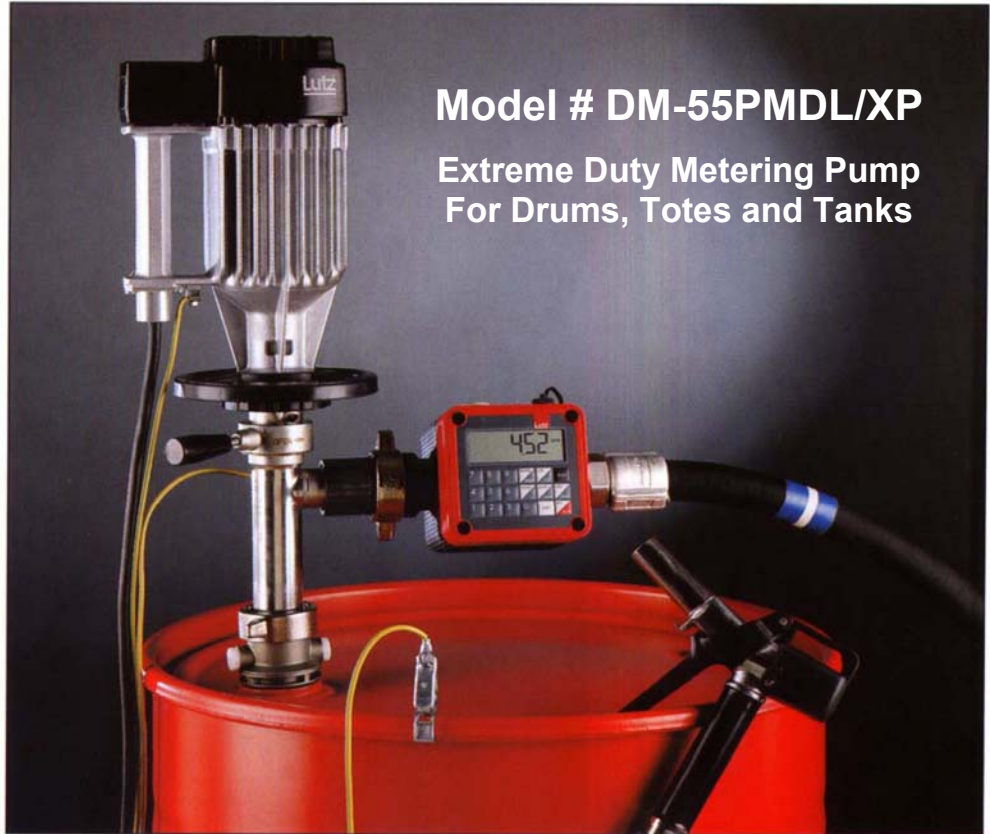


# Metering Pump • Flow Control System

**A modular construction with the customer and their environment in mind.**



*The above features a complete system for environmental safety comprising MSL-PP pump tube, automatic flow and emission control unit.*



**Model # DM-55PMDL/XP**

**Extreme Duty Metering Pump  
For Drums, Totes and Tanks**

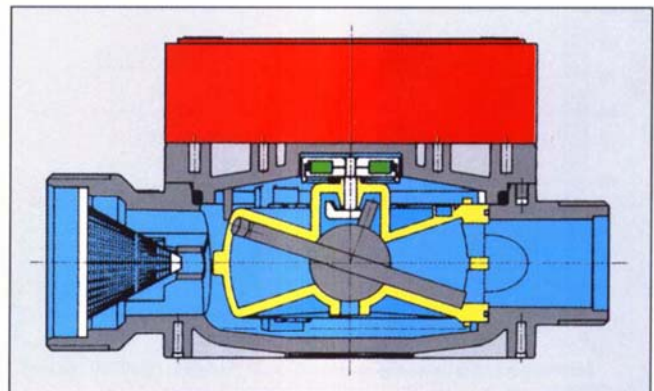
*Illustrated to the right the Lutz Heavy Duty UL/cUL listed motor with stainless pump tube, LM Totalizer, Conductive hose, grounding wire and nozzle.*

## **Benefits:**

- Modular Construction
- Robust Design
- Choice of Resistant Materials (consult our chemical resistant table)
- Fingertip Calibration
- Remote Control Facility
- Large 6-Digit LCD Display
- Built-in Data Protection
- Memory Capacity for 9 different liquids
- Protective Strainer provided
- Battery Condition Indicator
- No special Batteries required
- Easy Installation
- Trouble-free Maintenance

## **Optimisation of a tried and tested technology.**

At the heart of the Lutz flow meter system is a measuring chamber with a rotating disc. Liquid passing through the chamber causes the disc to rotate about its axis, sending an impulse via a magnetic coupling to the display unit which in turn records the flow. Calibration for various liquids is done simply by keying-in the respective factors.



**DRUM-MATES® Inc.**

Liquid Process Equipment Div.

Tel: 609-261-1033, Email: drummates@comcast.net