

Drum Combo-Mixer-Pump

Model No. DM-55DMP/SS

With Stainless Steel Mixer-Pump Tube

Operating Information, Parts Views, Codes

Motor

A pneumatic pump drive using hand trigger On/Off press bar on the carrying handle to control compressed air flow with 400 watt output at 87 Psi and speed of 6900 Rpm using approximately 32 Cfm. The pump has a noise reducer and earth-ground connection for hazardous duty operation (with the included grounding kit) in potentially explosive atmosphere (Protection Class EN50014). A wall bracket is included to ensure safe storage and a drum bung safety adapter for secure tube mounting in the drum bung hole. Check chemical compatibility before use.



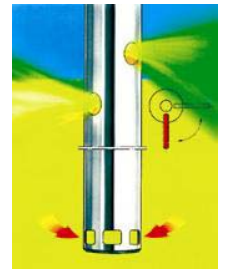
Pump Drive



Pump Tube

Pump Tubes

Supplied with stainless steel pump tube with 41mm OD. (Other tubes available: in 27" 47" lengths in Kynar (PVDF-polyvinylidene fluoride), aluminum alloy (Alu) and Hastelloy C (HC). Select the most suitable pump tube for your application(s) considering foremost, 1) the chemical compatibility with the fluid being pumped, 2) the material thickness and last but not least, 3) liquid flammability.



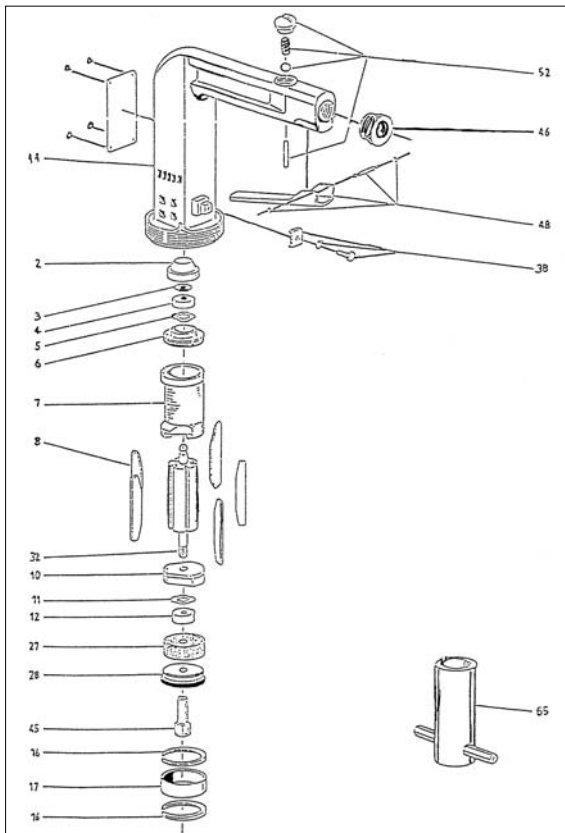
Flow Pattern

Applications & Examples of Liquids Pumped

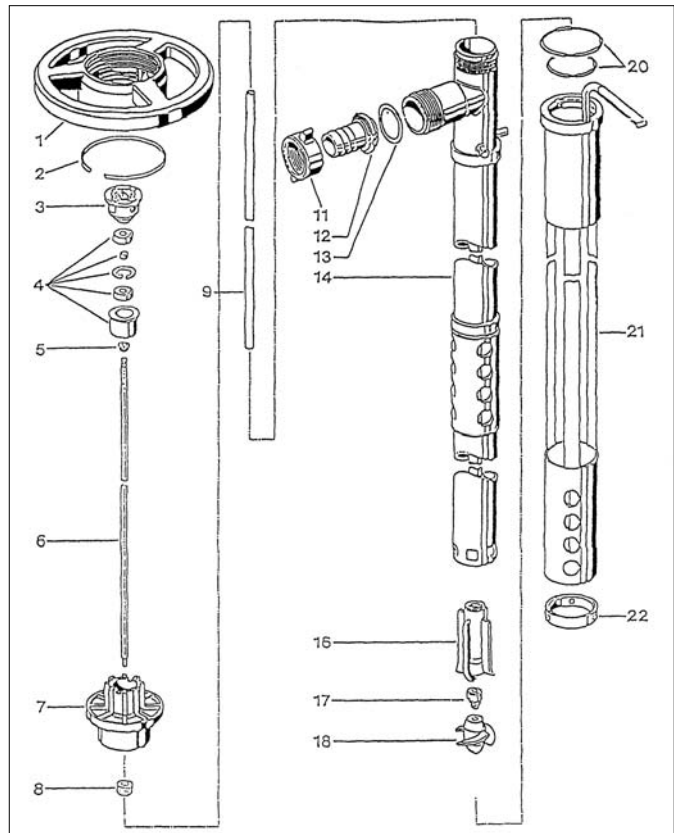
A light, easily handled, high performance pump for almost all types of thin-bodied to viscous, aggressive and flammable liquids. Chemicals, cleaners, coatings, concentrates, corrosives and many liquid compounds chemically compatible with stainless steel.

Operating Data

Flow rate:	up to 52 Gpm	Viscosity range:	up to 400 Cps (centipoise)
Delivery head:	up to 33 Ft.	Immersion depth:	Up to 39 inches
Temp. range:	up to 212° F	Total weight:	Motor-Pump assembly, 17 lbs.



Pump-Mixer Pneumatic Drive



Pump-Mixer Stainless Steel Tube

Parts List • DM-55DMP/SS Mixer-Pump Combo

DM-55DMP/SS combination drum mixer-pump can be used to mix and pump flammables if a grounding and bonding wire kit is attached to the relevant components by a certified safety engineer or electrician. Please read and apply the operating instructions before operating pump.

Part Number	Description
<hr/> Mixer-Pump Tube Parts List <hr/>	
0343-842	Hand wheel
0301-508	Snap ring
00201-004	Coupling kit
0150-038	Bearing unit
0314-000	V-seal Viton
0150-028	Drive shaft, 39" SS
0131-000	Connection flange, AL
0314-048	Shaft seal, EPDM
0150-032	Guide bushing, 39"
0302-068	Wing nut
0151-196	Hose connection, 1", SS
0313-195	Seal, PTFE
0151-746	Outer tube, 39", SS
0151-040	Bearing star, complete
0201-056	Mechanical seal kit
0151-030	Rotor, ETFE
0203-019	O-ring, Viton
0151-745	Turning sleeve, SS
0151-744	Holding ring
<hr/> Mixer-Pump Drive Parts List <hr/>	
0371-425	Protection Cap
0301-942	Snap ring
0321-006	Ball Bearing
0301-695	Bearing Washer
0204-216	Bearing Plate
0371-248	Stator
0343-169	Vane
0204-217	Bearing Washer
0301-694	Ball Bearing Washer
0321-926	Ball Bearing
0301-435	Snap Ring (2)
0343-162	Sleeve
0371-455	Threaded Cap
0371-451	Rotor Shaft
0204-039	Earth Connection
0204-148	Motor Housing
0371-454	Drive Shaft
0371-452	Connecting Ring
0204-153	Trigger
0204-155	Pressure Valve
0205-000	Key