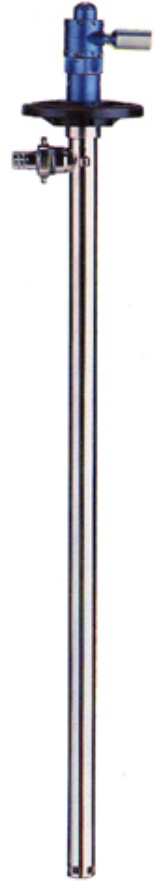


Air Operated Drum & Tank Pumps

Model DM-55DPB Xtreme Duty Pneumatic Pump

Pump Tubes: 316SS, Polypropylene, Kynar (PVDF)



Specifications, Parts Codes & Views

Applications & Examples of Liquids Pumped

A high performance, industrial duty, easily handled, pneumatic explosion proof (when used with the DM-166GWK grounding kit) pump for most types of mild or aggressive liquids up to medium thickness (450 centipoise). Ideally suited for transferring flammable or combustible liquids. Chemicals, cleaners, concentrates, corrosives, solvents and many liquid compounds compatible with the equipment materials listed here. Bung or clamp mounted for secure pumping.

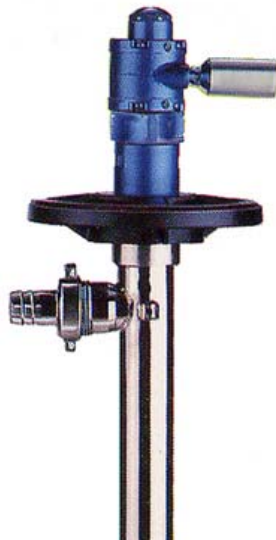
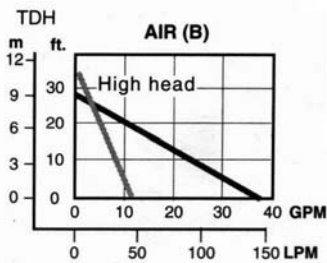
Drum Pump Drive Specifications

This interchangeable pneumatic pump drive is designed for use with any type of "DP" series drum or tote/tank pump tubes. Operating specifications are included with each assembly. The drive provides variable flow control, with an unlimited dry-run cycle. Use the bung safety adapter **DM-55BA/PP** or **ISS** for tube security and the **DM-55PWB-L** hanging bracket for safe pump tank mounting or wall storage.

Model DM-55DPB-B, ½ Hp (370 watts), Max. 38 Gpm (167L), 450 Cps., 22 cu. ft./min. @ 90 Psi – 10,000 Rpm. Wt. 3 lbs. (1.6 Kg.) Aluminum housing with plastic mounting bracket. Pump drive not suitable for flammable-hazardous duty or in areas with flammable materials. 28 ft. head, 35 ft. and 1500 Cps with High-Head pump tube.

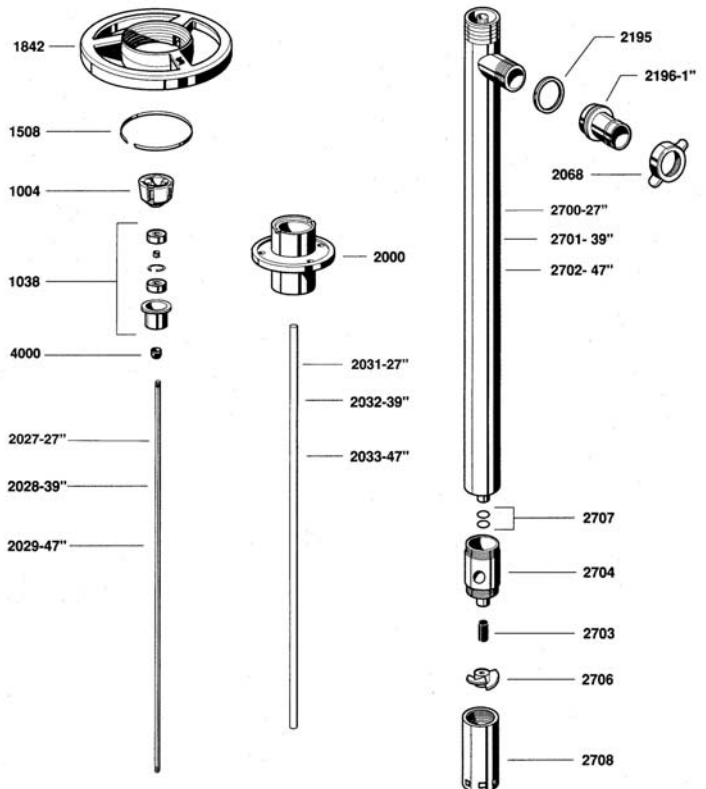
Pump Tubes

In polypropylene, (Max.130°F), Kynar (PVDF 180°F), 316 stainless steel (180°F), with internals of Teflon, ceramic, carbon and Hastelloy. Use pump tube most compatible for the application liquid and thickness. A "**High-Head**" **HH** version of these pump tubes is available, increasing both the head (pumping height) and thickness capacity of the pump. The stainless steel tube pictured below is representative of the other tubes.



Model DM-55DPB Drum Pump Drive

SP-SS 27"- 39"- 47" SEAL-LESS 316 SS PUMP TUBE

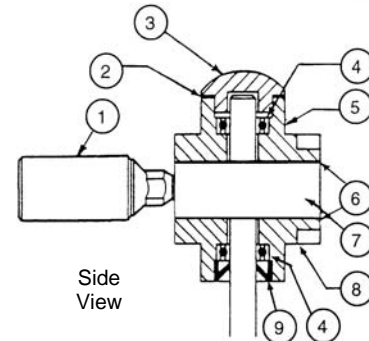
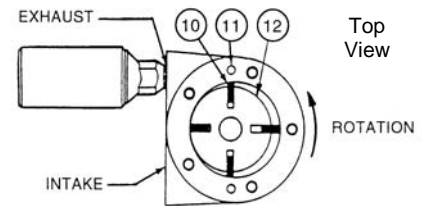


DM-SS8339 Stainless Steel Drum Pump Tube

Model No. DM-55DPB

Pneumatic Drive, Parts List & Views

Item #	Part No.	Part Description
1	55-0710	Muffler
2	55-0706	Gasket
3	55-0705	Dead End Cap
4	55-0716	Bearing (2 Required)
5	55-0713	Dead End Plate
6	55-0719	Gaskets (2 Required)
7	55-0711	Drive Body
8	55-0712	Drive End Plate
9	55-0717	Shaft Seal
10	55-0715	Vane (Set of 4)
11	55-0718	Dowel Pins (2 Required)
12	55-0714	Rotor
13	55-0708	Repair Kit (Items 2, 4, 6, 9, 10)
14	55-6140	Adapter coupling (not shown)



Warnings & Notices

CAUTION

Before unpacking this motor, read and fully understand all safety and operating instructions. Properly Bond and Ground all pump operation components according to the operating instructions and National Fire Protection Code #77. If in doubt, stop and check with a safety engineer. Never use plastic components in a flammable pumping operation which can prevent grounding, cause a spark, flames, explosion, injury or death to people. When pumping flammables, for safety, only use the stainless steel, DM-SS8339 pump tube with this pneumatic drive.

IMPORTANT: Operator must always wear all necessary safety equipment including, safety eyeglasses, respirator, safety gloves, apron, shoes and noise protection.

Warranty Compliance Notice

The DM-55FRL or an equivalent FRL (air filter, pressure regulator and automatic oiler) must be used to maintain drive performance.

Optional Accessories:

DM-55PWB-L, pump safety storage bracket, vinyl coated steel
 DM-55DP0150/SK, pump service kit with 2 year internal parts
 DM-55DPFM, Flow meter, 4-31 Gpm, 59 Psi, Accur: +/- 1%, 1" Npt

Xtreme Duty Hand Dispensing Nozzles (see below)



DM-85HFR Series Nozzles
Polypropylene, SS, Viton



DM-700HFR Series Nozzles
Aluminum, Stainless, Teflon



DM-800HFR Series Nozzles
316 Stainless steel & Teflon



Ask for literature on DRUM-MATES® drum/tote mixers, drum tumblers, drum/tote pumps & hand nozzles.
 DRUM-MATES® Inc., Liquid Processing Equipment Div., Tel: 609-261-1033, Fax: 609-261-1034, E: drummates@comcast.net