

# Air Operated Drum & Tank Pumps

## Model DM-55DPF *Xtreme Duty* Pneumatic Pump

Pump Tubes:  316SS,  Polypropylene,  Kynar (PVDF)

### Specifications, Parts Codes & Views

#### For Use in Factory, Laboratory, Shop and Field

A high performance, industrial duty, ergonomic, air operated, explosion proof (when used with the DM-166GWW grounding kit) pump for most types of thin-bodied up to medium thick, 750 Cps, liquids of all kinds including chemicals, cleaners, concentrates, corrosives, solvents, flammable liquids and many liquid compounds compatible with the equipment materials listed here. Can be bung or clamp mounted for secure pumping in pails, drums, totes or tanks. **This equipment is generally interchangeable with other drum pump brands.**

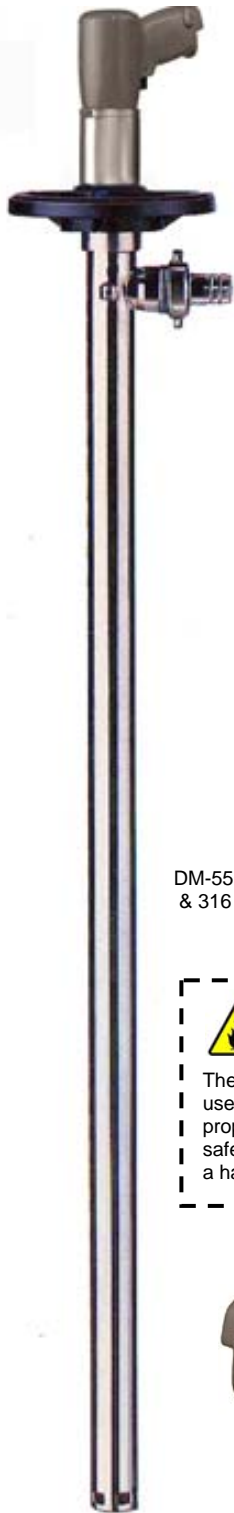
#### Drum Pump Drive Specifications

This interchangeable pneumatic pump drive is designed for use with any type of "DP" series drum or tote/tank pump tubes. Operating specifications are included with each assembly. It will provide variable flow control with an unlimited dry-run cycle. Use the bung safety adapter **DM-55BA/PP** or **/SS** for tube security and the **DM-55PWB-L** hanging bracket for safe tank mounting or wall storage.


**Model DM-55DPF Pump Drive**, ¼ Hp (550 watts), Max. 33 Gpm (145L), 750 Cps., 28 cu. ft./min. @ 90 Psi – 10,000 Rpm. Wt. 3.5 lbs. (1.4 Kg.) Aluminum housing is Plastisol coated to prevent sparking. Metal mounting bracket. Consult with a qualified Safety Engineer for use in hazardous area or with flammables. Drive transfers up to a 29 ft. head, or up to 42 ft. and 1500 Cps with special **High-Head** pump tube.

#### Pump Tube Specifications

**DM-8339SS Xtreme Duty Pump Tube** Available in 39", 47" 60" and 72" with internals of Teflon, ceramic, carbon, Hastelloy and maximum operating temperature of 180°F. Tube diameter, 1.625" (41mm) Dispensing Port, 1.0" OD hose barb. Tubes are also available in polypropylene, (Max.130°F) and Kynar (PVDF 180°F), Choose the pump tube most compatible with your application liquid and thickness. A "**High-Head**" **HH** version of these pump tubes is available, increasing both the head (pumping height) and thickness capacity of the pump. The tube pictured here is representative of the other tubes.



DM-55DPF Pump  
& 316 S.S. Tube



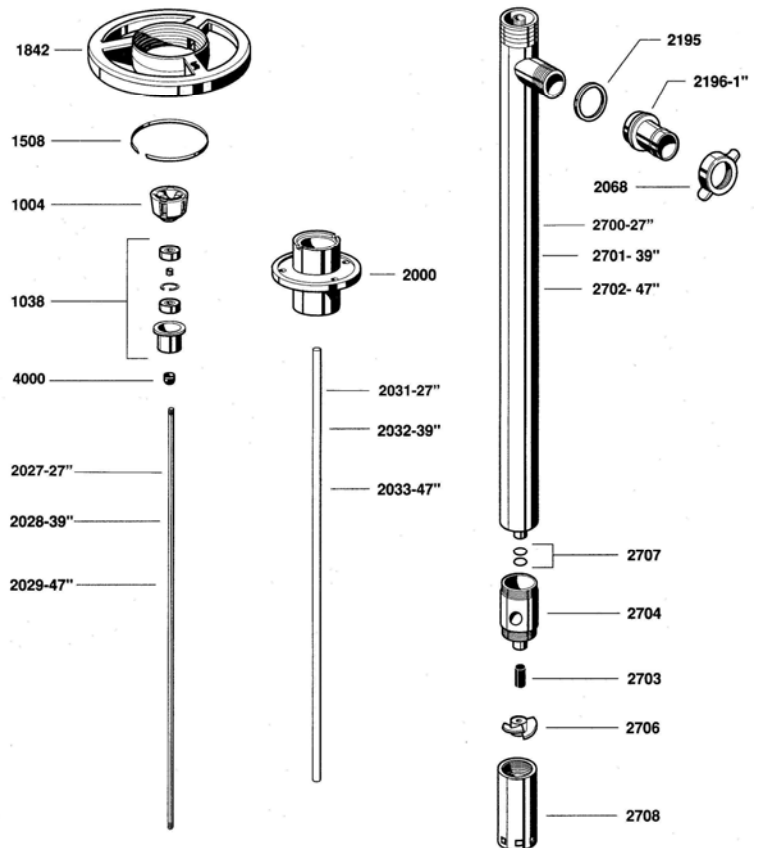
**CAUTION!**

These air motors are recognized for use in flammable operations when properly grounded. Consult a qualified safety engineer for suitability for use in a hazardous area or with flammables.



Model DM-55DPF Drum Pump Drive

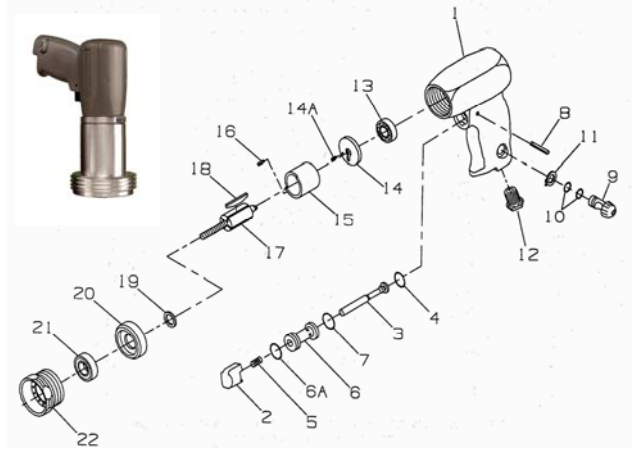
#### SEAL-LESS 316 SS PUMP TUBE



DM-SS8339 Stainless Steel Drum Pump Tube

# Model No. DM-55DPF

## Parts List & Expanded Parts View



Item No.	Part No.	Part Description
1	5317-40	Motor housing
2	S317-93	On/Off Trigger
3	S317-A302	Throttle valve assembly
4	S317-103	Throttle valve seal
5	S317-51	Throttle valve spring
6	S317-A503	Throttle valve body assembly
6A	S7802-291	Valve body seal
7	S7802-291	Valve body seal
8	S317-120	Valve body retaining pin
9	S3177A249	Speed regulator assy.
10	S310-169	Regulator seal (2 req'd)
11	S317-118	Regulator retainer
12	S317-38	Inlet bushing
13	S222-22	Rear rotor bearing
14	S317-A12	Rear end plate assembly
14A	S308-98	Dowel (end plate)
15	S317-A3	Cylinder assembly
16	S308-98	Cylinder dowel
17	S317-53	Rotor
18	S317-42-4	Rotor vanes ( 4 )
19	S317-65	Rotor spacer
20	5317-11	Front end plate
21	S317-22	Front rotor bearing
22	S317-27	Motor locknut
Not Shown	SAF-350	Muffler

### Warnings & Notices

#### CAUTION

Before unpacking this motor, read and fully understand all safety and operating instructions. Properly Bond and Ground all pump operation components according to the operating instructions and National Fire Protection Code #77. If in doubt, stop and check with a safety engineer. Never use plastic components in a flammable pumping operation which can prevent grounding, cause a spark, flames, explosion, injury or death to people. When pumping flammables, for safety, only use the stainless steel, DM-SS8339 pump tube with this pneumatic drive.

**IMPORTANT:** Operator must always wear all necessary safety equipment including, safety eyeglasses, respirator, safety gloves, apron, shoes and noise protection.

#### Warranty Compliance Notice

The DM-55FRL or an equivalent FRL (air filter, pressure regulator and automatic oiler) must be used to maintain drive performance.

### Optional Accessories:

DM-55PWB-L, pump safety storage bracket, vinyl coated steel  
 DM-55DP0150/SK, pump service kit with 2 year internal parts  
 DM-55DPPM, Flow meter, 4-31 Gpm, 59 Psi, Accur: +/- 1%, 1" Npt  
**Xtreme Duty** Hand Dispensing Nozzles (see below)



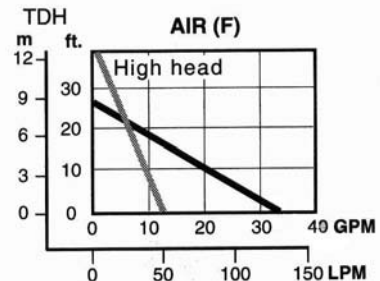
DM-85HFR Series Nozzles  
Polypropylene, SS, Viton



DM-700HFR Series Nozzles  
Aluminum, Stainless, Teflon



DM-800HFR Series Nozzles  
316 Stainless steel & Teflon



Ask for literature on DRUM-MATES® drum/tote mixers, drum tumblers, drum/tote pumps & hand nozzles.  
 DRUM-MATES® Inc., Liquid Processing Equipment Div., Tel: 609-261-1033, Fax: 609-261-1034