

Electric 55 Gal. Drum Pump

Model No. DM-55ENCS115 or 220
with Polypropylene or Stainless Steel Pump Tube



DM-55ENCS115 Drum Pump
For Non-Flammable Use Only!

Specifications, Parts Views & Codes

Drum Pump Assembly

This **interchangeable drum pump** is designed for use with any quantity, size or type of "DP" series pump tubes. The universal electric TEFC double insulated motor operating specifications are 825 watt, (1.1 Hp.), 115 volt, 60 Hz, or 220 volt, 50 Hz. Includes bipolar on/off switch at handle grip for safer handling, with thermally protected manually resettable overload release and drop-in cartridge brush system. Motor and anodized housing recommended for use in corrosive areas or where high levels of fumes are present.

Dry-run cycle not to exceed 5 minutes. A "high-lift" impeller option can be ordered that increase the head by about double. Order and use **DM-55PWB-L** wall bracket to ensure safe storage. Use drum bung safety adapter **DM-55BA/PP** for secure tube mounting. **WARNING!** - Pump drive not suitable for flammable-hazardous duty or in areas with flammable materials.

Pump Tubes

Polypropylene pump tube MOC's: PTFE, Carbon, Hastelloy 256C, polypropylene
316 stainless steel pump tube MOC's: PTFE, Viton, Carbon, Hastelloy 256C, 316 stainless steel
(Other tubes available: Kynar (PVDF-polyvinylidene fluoride). Select the most suitable pump tube and length for your application(s) considering foremost, 1) the chemical compatibility with the fluid being pumped, 2) the material thickness and last but not least, 3) liquid flammability. This electric pump drive is **NOT PERMITTED** for flammable materials or area use.

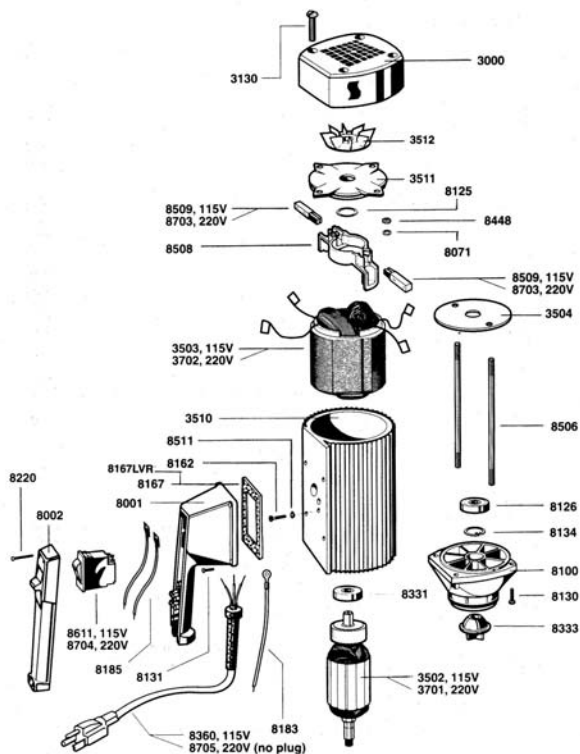
Applications & Examples of Liquids Pumped

A light, easily handled, high performance pump for almost all types of thin-bodied, slightly viscous, aggressive and non-flammable liquids. Chemicals, cleaners, concentrates, corrosives and many liquid compounds chemically compatible with polypropylene.

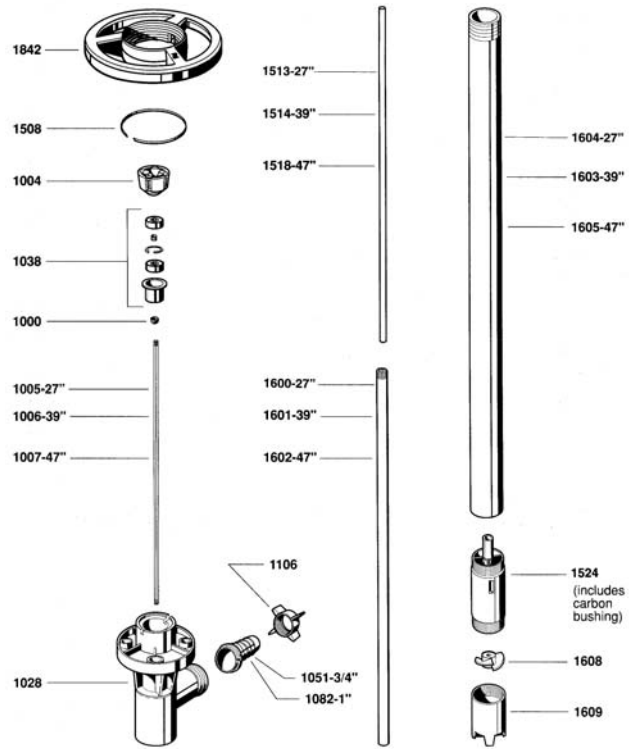
Operating Data

Flow Rate: up to 32 Gpm
Delivery Head: up to 32 Feet
Temp. Range: up to 132° F
Pressure Output: up to 13.8 Psi

Material Density: 1.8 Specific gravity:
Hi-Lift Delivery Head: 65 Feet
Pump Assembly Weight: <20 lbs.
Viscosity Range: up to 750 cps (centipoise)



DM-55ENCS115/220 Drum Pump Drive



Typical Pump Tube (Polypropylene, 316SS or PVDF)

Parts List • DM-ENCS110 or 220 Pump Drive

DM-55ENCS TEFC motor should not be used to pump flammables or in areas where flammable materials are being used. Read, understand operating instructions before operating pump. Prices subject to change without notice. Made in USA. *Interchangeable Pump Drive Part

825 WATTS, 1 PHASE, 50 or 60 CYCLE

Part Number, 110 VAC	Description
3000*	Motor cover
3130	Screw
3501	Fan
3502	Armature, 115V
3503	Stator, 115V
3504	Guide disc
3510	Motor housing
3511	Bearing cover
8001*	Switch housing
8002*	Switch cover
8071*	Lock washer
8100*	Lower housing
8125*	Wave washer
8126*	Ball bearing
8130*	Screw
8131*	Screw
8134*	Snap ring
8162*	Ground screw
8167*	Gasket
8183*	Earthing lead
8185*	Lead
8220*	Screw
8331*	Ball bearing
8333*	Motor coupling
8360*	Cord, 115V, SJT3 w/strain relief, 16 ft. (5m), plug
8448*	Hexagon nut
8506*	Rod connector
8508*	Brush holder
8509*	Carbon brush, 115V
8511*	Star washer
8611*	Overload switch, 8.5 amp, 115V

Part Number, 220VAC, IP-54 enclosure

3701	Armature, 220V, TEFC
3702	Stator, 220V, TEFC
8703*	Carbon brush, 220V
8704*	Overload switch, 5 amp, 220V
8705*	Power cord, 16 ft. (5m) HarHo7 cable, no plug

Optional Accessories:

DM-55PWB-L, pump wall safety storage bracket, vinyl coated steel
 DM-55DP0150/SK, pump service kit with brushes, impellers, bearings, couplings, etc.
 DM-55DPFM, DP flow meter, 4-31 Fpm, 59 Psi, Accur: +/- 1%, 1" Npt Port
 Hand Dispensing Nozzles (see below)



DM-85HFR Series Nozzles
Polypropylene, SS, Viton



DM-700HFR Series Nozzles
AL, Brass or SS, Viton or TFE



DM-800HFR Series Nozzles
316 Stainless steel & Teflon



DRUM-MATES® pump and mixer equipment assemblies are supplied as components, each sold separately. Ask for literature on DRUM-MATES® drum/tote mixers, drum tumblers, drum/tote pumps & hand nozzles. DRUM-MATES® Inc., Liquid Processing Equipment Div., Tel: 609-261-1033, Fax: 609-261-1034