

# Electric 55 Gal. Drum Pump

## Model No. DM-55ODPL220 & DM-55DP/0150 Stainless Steel Pump Tube



### Operating Information, Exploded Views and Part Codes

#### Motor

Universal electric motor operating at 220 volt, 640 watt, 50 Hz. With bipolar on/off switch with single-pole thermal overcurrent release. Open drip-proof motor is double insulated. Not suitable for hazardous duty. Handle grip offer safer handling. Dry-run cycle not to exceed 5 minutes. Use wall bracket to ensure safe storage.

#### Pump Tubes

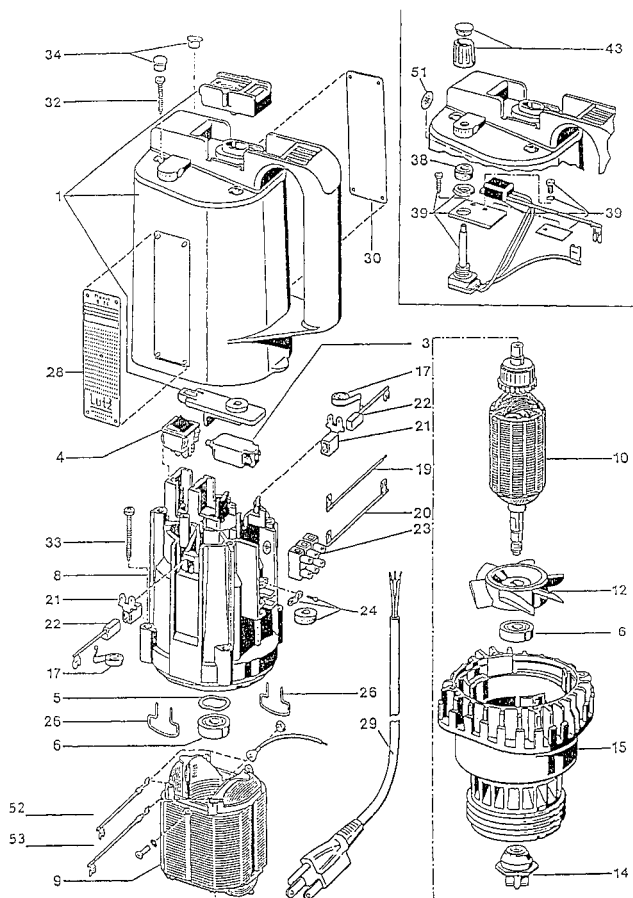
Supplied with stainless steel pump tube or for various applications your choice of polypropylene (PP), polyvinylidene fluoride (PVDF), aluminium alloy (Alu) and Hastelloy C (HC). Select the most suitable pump tube for your application(s) considering foremost, 1) the chemical compatibility with the fluid being pumped, 2) the material thickness and last but not least, 3) liquid flammability.

#### Applications & Examples of Liquids Pumped

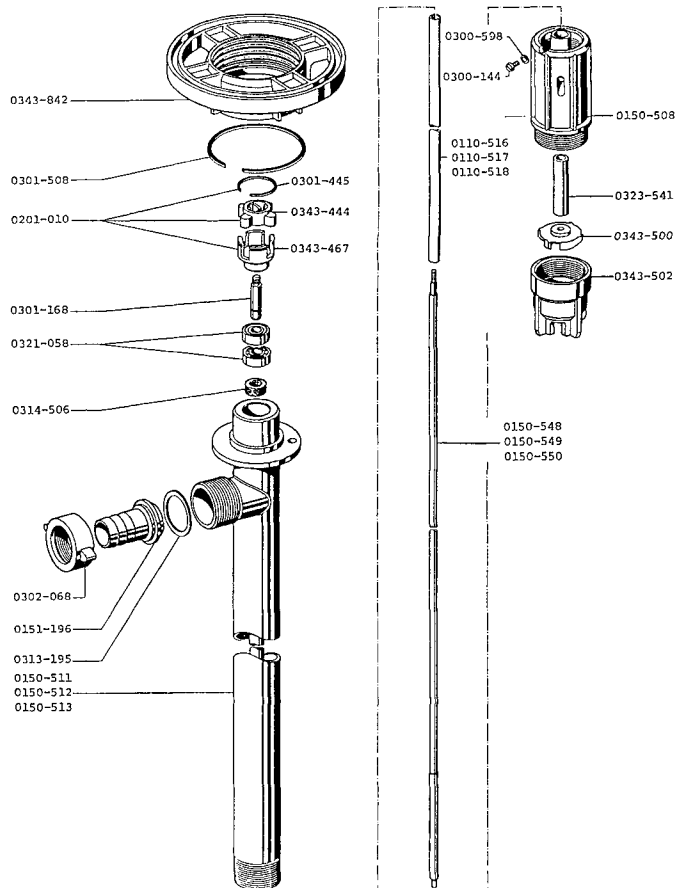
A light, easily handled, high performance pump for almost all types of thin-bodied, slightly viscous, aggressive and non-flammable liquids. Chemicals, cleaners, concentrates, corrosives and other liquid compounds that are chemically compatible with 316 stainless steel.

#### Operating Data

Flow rate: up to 54.5 Gpm  
Delivery head: up to 68.5 Ft.  
Temp. range: up to 248° F  
Viscosity range: up to 1000 cps (centipoise)  
Weight: Less than 15 lbs. (7 Kg.) (motor & pump tube)



DM-55ODPL220 Drum Pump Drive, 220VAC/1PH/50Hz



DM-55DP/0150 Drum Pump Tube, Stainless steel, 39"