

# Drum Combo-Mixer-Pump

## Model No. DM-55DMP/XP-SS

### With Stainless Steel Mixer-Pump Tube

## Operating Information, Parts Views, Codes

### Motor

An explosion proof electric pump/mixer drive using hand trigger On/Off to control. The pump has an earth-ground connection for hazardous duty operation (when used with a grounding kit) in potentially explosive atmosphere (Protection Class EN50014). A wall bracket is included to ensure safe storage. Order the optional safety drum bung safety adapter DM-55BA/SS for explosion proof secure tube mounting in the drum bung hole. Check chemical compatibility before use. 120VAC/1PH/60Hz, 640W, 16 ft. power cord. Explosion proof for protection class I, groups C & D, Class II, groups F & G.

### Pump Tubes

Supplied with stainless steel pump/mix tube 39" length x 41mm OD. Pump tube is interchangeable with other pump tubes. Especially useful whenever maintaining homogeneity of suspensions, mixtures, dispersions, emulsions or compounds that tend to stratify, separate or settle out. Tube is equipped with special flow holes for the mixing function. The mixing and pumping function can be infinitely varied for greater or lesser relative functions.

### Applications & Examples of Liquids Pumped

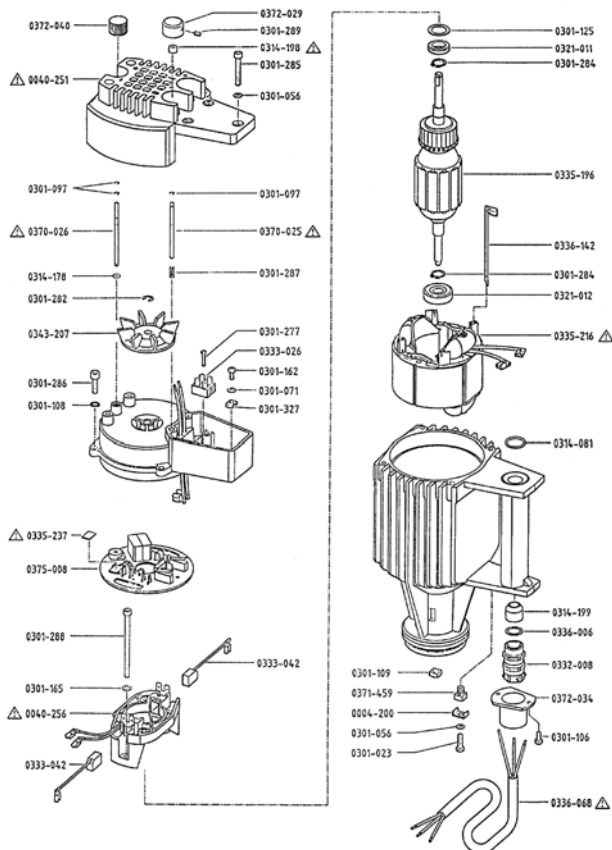
A light, easily handled, high performance pump for almost all types of thin-bodied to viscous, aggressive and flammable liquids. Chemicals, cleaners, coatings, concentrates, corrosives and many liquid compounds chemically compatible with stainless steel.

### Operating Data

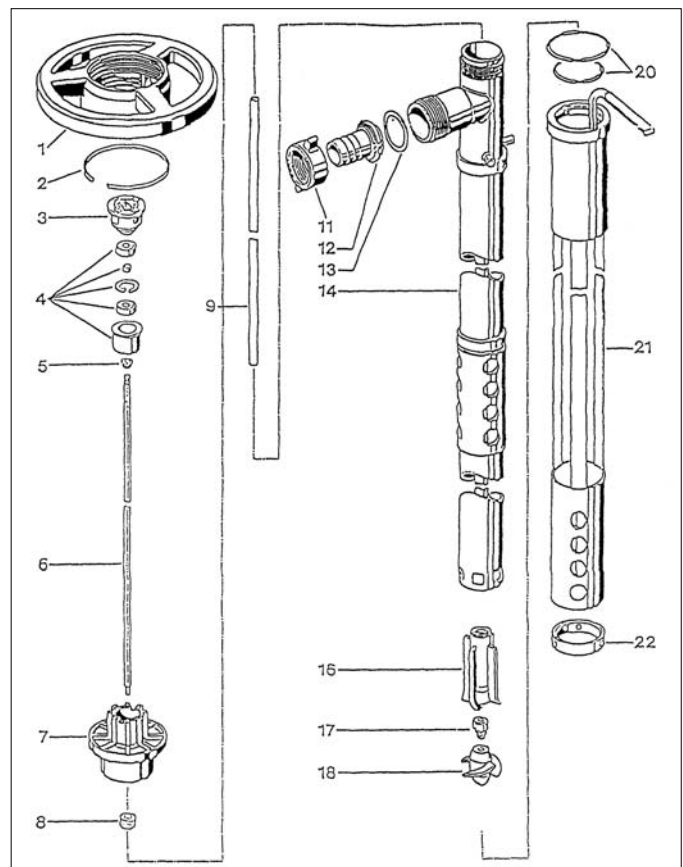
Flow rate:	up to 51 Gpm	Viscosity range:	up to 1000 Cps (centipoise)
Delivery head:	up to 36 Ft.	Immersion depth:	Up to 39 inches
Temp. range:	up to 212° F	Total weight:	Motor-Pump assembly, 17 lbs.



Mixing Flow Pattern



Pump Drive Exploded View



Pump-Mixer Stainless Steel Tube

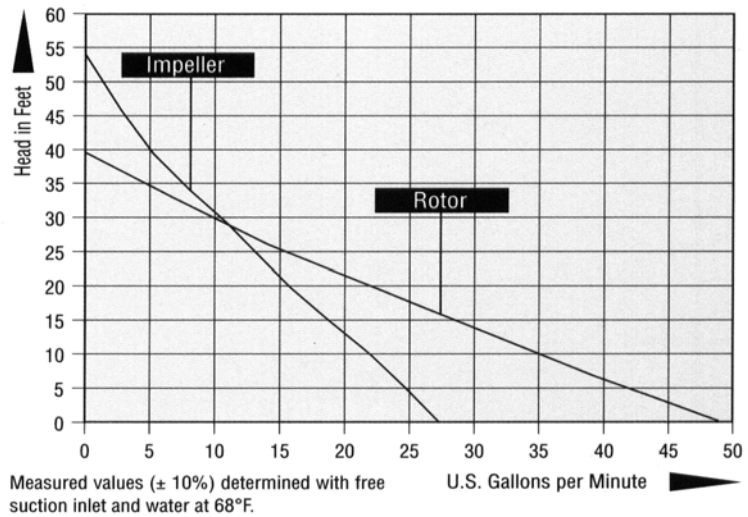
# DM-55DMP/SS Combo Mixer - Pump

## Drive & Tube Parts List & Flow Charts

DM-55DMP/SS combination drum mixer-pump can be used to mix and pump flammables if a grounding and bonding wire kit is attached to the relevant components by a certified safety engineer or electrician. Please read and apply the operating instructions before operating pump.

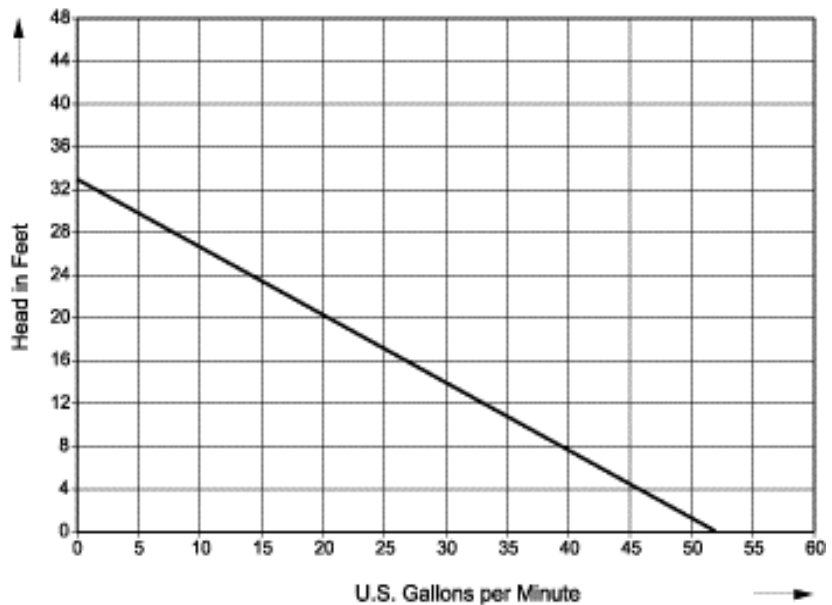
### Part No. Pump Tube Parts List \* Recommended Spare Parts

0343-842	Hand wheel
0301-508	Snap ring
0201-004	Coupling kit
0150-038	Bearing unit
0314-000*	V-seal Viton
0150-028	Drive shaft, 39" SS
0131-000	Connection flange, AL
0314-048*	Shaft seal, EPDM
0150-032*	Guide bushing, 39"
0302-068	Wing nut
0151-196	Hose connection, 1", SS
0313-195*	Seal, PTFE
0151-746	Outer tube, 39", SS
0151-040*	Bearing star, complete
0201-056*	Mechanical seal kit
0151-030	Rotor, ETFE
0203-019*	O-ring, Viton
0151-745	Turning sleeve, SS
0151-744	Holding ring



### Part No. Pump Drive Parts List \* Recommended Spare Parts

0040-251	Fan Cover
0040-256	Brush Holder
0301-056	Snap Ring (6)
0301-071	Snap Ring
0301-097	Snap Ring (4)
0301-125	Bearing Washer
0314-081	O-Ring Viton
0314-178	O-Ring
0301-694	Ball Bearing Washer
0314-198	Shaft Seal (2)
0314-199	Sealing Ring
0343-162	Sleeve
0321-011*	Ball Bearing
0321-012*	Ball Bearing
3333-042*	Carbon Brush (2)
0335-196*	Armature
0335-237*	Heating Foil
0343-207	Fan
0370-025	Switch Shaft- (2)
0370-026	Speed Control Shaft
0372-034	Gland Protector



For best batch mixing Quality Control before pumping, ask for DRUM-MATES® TQMixing™ Guidelines.  
 NOTE: For easy "Pick 'n' Match", all mixer shafts, mixer drives and accessories are sold separately.  
 DRUM-MATES® Inc., Mixer & Pump Div., Tel: 1-800-621-3786 and 609-261-1033, Fax: 609-261-1034