

# Drum Combo Pump, Mix > Dispense

## Model No. DM-55DMP Electric Series

### With Mixer-Pump Tube Material Best for Your Application

(Popular stainless steel tube shown)

### Operating Information, Parts Views, Codes

#### Motor

An powerful electric pump drive using hand trigger On/Off on the carrying handler to control liquid flow with 800 watt output with 120VAC/1PH/60Hz. The pump has low noise output and is not intended for explosive proof use. A drum bung safety adapter is recommended for secure tube mounting in the drum bung hole. Always check chemical compatibility before use.



Pump Drive



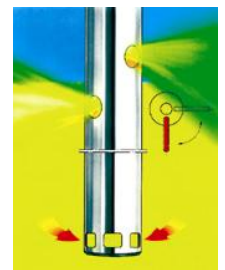
Pump Tube

#### Pump Tubes

Supplied with 41mm OD pump tube in stainless steel, Kynar (PVDF-polyvinylidene fluoride), aluminum alloy (Alu) or Hastelloy C (HC). Other tubes lengths available: 27" 47". Select the most suitable pump tube for your application(s) considering foremost, 1) the chemical compatibility with the fluid being pumped, 2) the material thickness and last but not least, 3) liquid flammability.

#### Applications & Examples of Liquids Pumped

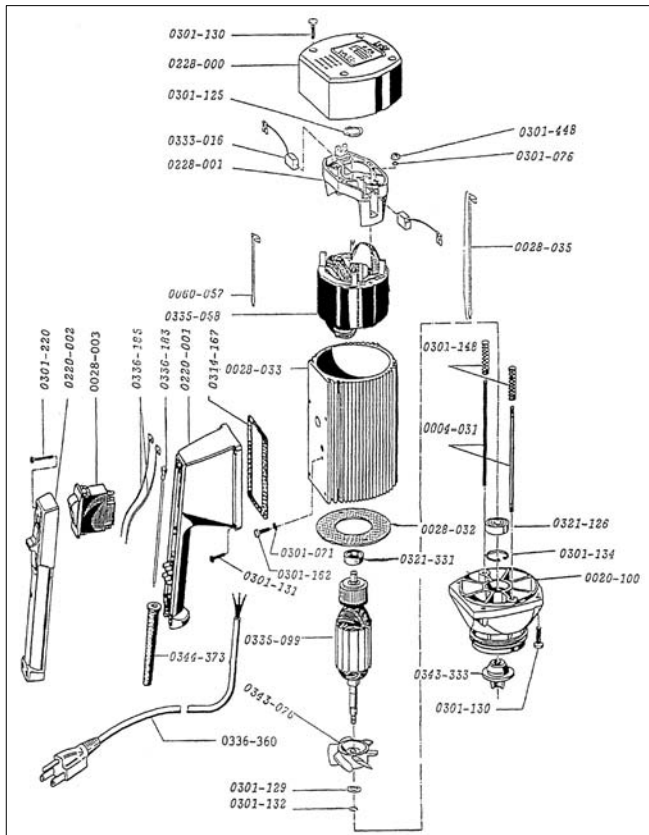
A light, easily handled, high performance pump for almost all types of thin-bodied to viscous, aggressive and flammable liquids. Chemicals, cleaners, coatings, concentrates, corrosives and many liquid compounds chemically compatible with stainless steel.



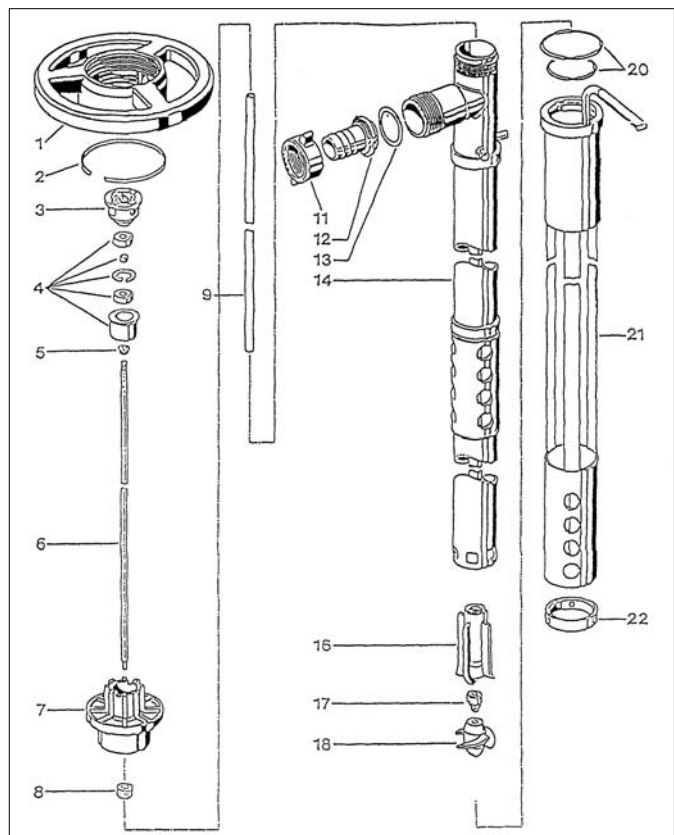
Flow Pattern

#### Operating Data

Flow rate:	up to 52 Gpm	Viscosity range:	up to 400 Cps (centipoise)
Delivery head:	up to 33 Ft.	Immersion depth:	Up to 39 inches
Temp. range:	up to 212° F	Total weight:	Motor-Pump assembly, 17 lbs.



Combo-Pump Electric Drive



Combo-Pump Stainless Steel Tube

# Parts List • DM-55DMP/SS Mixer-Pump Combo

DM-55DMP/SS combination drum mixer-pump can be used to mix and pump flammables if a grounding and bonding wire kit is attached to the relevant components by a certified safety engineer or electrician. Please read and apply the operating instructions before operating pump.

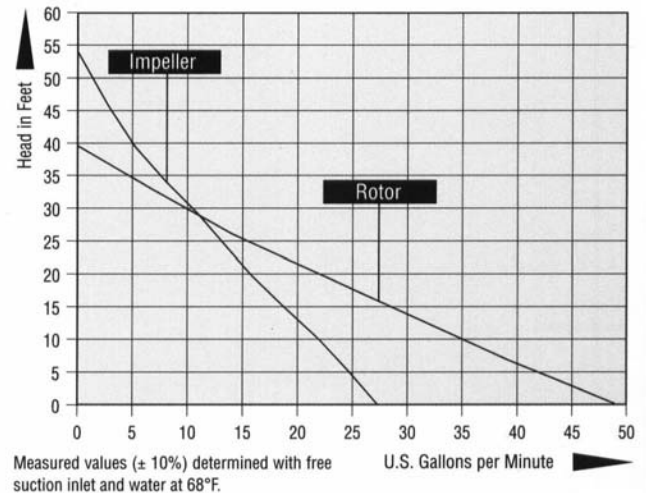
Part # Description

## Mixer-Pump SS Tube Parts List

0343-842	Hand wheel
0301-508	Snap ring
00201-004	Coupling kit
0150-038	Bearing unit
0314-000	V-seal Viton
0150-028	Drive shaft, 39" SS
0131-000	Connection flange, AL
0314-048	Shaft seal, EPDM
0150-032	Guide bushing, 39"
0302-068	Wing nut
0151-196	Hose connection, 1", SS
0313-195	Seal, PTFE
0151-746	Outer tube, 39", SS
0151-040	Bearing star, complete
0201-056	Mechanical seal kit
0151-030	Rotor, ETFE
0203-019	O-ring, Viton
0151-745	Turning sleeve, SS
0151-744	Holding ring

## Mixer-Pump Drive Parts List

0371-425	Protection Cap
0301-942	Snap ring
0321-006	Ball Bearing
0301-695	Bearing Washer
0204-216	Bearing Plate
0371-248	Stator
0343-169	Vane
0204-217	Bearing Washer
0301-694	Ball Bearing Washer
0321-926	Ball Bearing
0301-435	Snap Ring (2)
0343-162	Sleeve
0371-455	Threaded Cap
0371-451	Rotor Shaft
0204-039	Earth Connection
0204-148	Motor Housing
0371-454	Drive Shaft
0371-452	Connecting Ring
0204-153	Trigger
0204-155	Pressure Valve
0205-000	Key



### DRUM-MATES™ Inc.

Tel: 609-261-1033

Fax: 609-261-1034

E: info@drummates.com

PO Box 636, Lumberton, NJ 08048